



OH BRC YOPAG¹ Group 'A PPI Co-production model'

Katrin Wilhelm, Julia Hamer-Hunt, Roger Ede, Asher Wood, Sophie Pannett-Smith, Cora Reilly-McGeown

Our purpose: interconnected themes and
intergenerational benefits

An intergenerational, cross-theme collaboration
within the BRC



Mission statement

- To serve as a resource of people and knowledge that empowers and equips intergenerational YPAG and Patient and Public Involvement (PPI) participants within OH BRC research.
- By fostering skills, networking, and knowledge exchange, we aim to integrate and enhance meaningful co-production and co-research partnerships across OH BRC themes and beyond.

Overarching aims

1. Empower and Equip Stakeholders:

1. To enable and empower patients, the public, and researchers by building **skills**, fostering knowledge exchange, and enhancing competencies in PPI methodologies to create 'research-ready communities' and 'community-ready researchers'.

2. 'Integrate PPI Across Research Projects: To ensure meaningful **intergenerational** integration of PPI in all stages of research across OH BRC themes, facilitating equal partnerships between public contributors and researchers while addressing power dynamics.

3. Enhance Quality and Innovation: To continuously **improve the quality** of PPI activities, foster innovative engagement methods, and ensure that contributions from the public and patients are impactful, transparent, and aligned with research goals.

YOPAG PPI members

- BRC themes Depression Therapeutics, Molecular Targets, E-Co-Flourishing and YPAG
- Open to other members
- Bio (the 'Why' of joining)
- Links to themes, NeurOxYPAG, PAR

YOPAG PPI's role

- Work with researchers in various ways (co-authoring, co-design, collaborate, production, research)
- Help to avoid tokenism, patient benefit
- Challenge assumption
- Provoke thoughts and actions
- Provide viewpoints on potentially uncomfortable topics
- 'Shapeshift' to create change within the research environment
- Leverage PPI expertise and experience
- Foster a research community





Objectives & Aims



Objective 1 - Maintain a Comprehensive Portfolio (process)

- Showcase the activities and achievements of the YOPAG group.
- Develop an up to date glossary of terms for clarity and accessibility.
- Champion a visual map to navigate the ‘ecosystem’ of the OH BRC.
- Maintain a “Toolkit” that outlines the research cycle and essential research skills (e.g., statistics).
- Clearly articulate the aim of YOPAG and its role within the OH BRC.

Objective 2 - PPI Enabling and Empowering

- **Training and Skill Development:** Identify shared training needs and organize training sessions in collaboration with the BRC PPIE team. Provide resources to build competencies in PPI methodologies, promoting the idea of ‘research-ready communities’ and ‘community-ready researchers.’
- Address potential **invisible skill gaps** to ensure inclusivity and effectiveness in PPI engagement.
- **Capacity Building:** Develop tools and frameworks to empower both patients, the public, and researchers, fostering active engagement throughout the research process.

Objective 3 – Integration of PPI

- **Embed PPI across OHBRC Themes:** Identify productive strategies to ensure that PPI is integrated at every stage of research, from design to dissemination.
- **Promote Collaborative Models:** Refine and implement co-research models that recognize and address inherent power differentials between researchers and public members.

Objective 4 – Enhancement of PPI impact

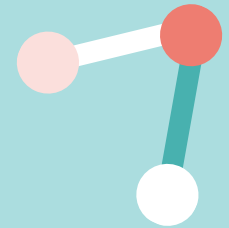
- **Quality Improvement:** To enhance and evaluate the quality of PPI activities using feedback and self-reflective practices.
- **Innovative Approaches:** To develop and promote innovative methods which meaningfully involve patients and the public, ensuring their contributions are impactful and integrated.

Objective 5 – Networking and Collaboration

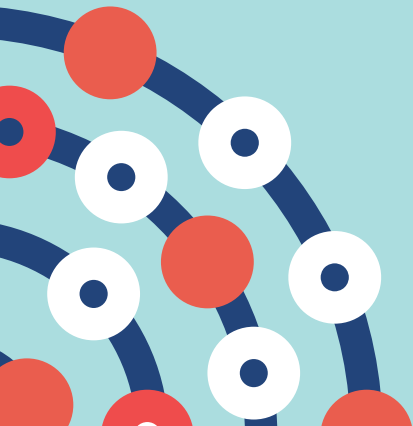
- **Build a Networking Framework:** To create intergenerational forums/platforms for skill-sharing and collaboration between researchers, YOPAG, and PPI participants across BRC (Biomedical Research Centre) themes.
- **Expand Partnerships:** To develop partnerships with researchers which facilitate co-design, promote co-production and enable co-authorship opportunities for YOPAG and PPI participants together with researchers. To expand the reach and impact of PPI and YOPAG by involvement with external organizations, community groups, and research funding bodies.

Objective 6 – Support for funding applications

- **Funding Opportunities:** To identify and investigate funding opportunities for projects involving PPI.
- **Support in Grant Writing:** To provide guidance in supporting of researchers and PPI participants for co-development and funding applications. To ensure that patient benefit is central to all future research projects by active engagement with PPI.
- **Sustainability of PPI Initiatives:** To secure funding that ensures long-term sustainability of PPI and successful research project outcomes in the best interests of patients



Portfolio



Portfolio overview

Research cycle

Research skills

Toolkit

Glossary

Map

Tools and Resources

- **(the below are suggestions for us to discuss)**
- **Website (forthcoming)**
- **Training Workshops:** Organize workshops on effective communication, conflict resolution, and participatory research methods.
- **Technology Solutions:** Use project and file management and communication tools that are user-friendly for all age groups to facilitate better collaboration.
- **Documentation and Reporting:** Maintain comprehensive records of all activities, decisions, and changes in the project to track progress and learn from the process.

Key activities

- **Workshops and Training Programs:** Conduct regular workshops to train researchers and public members on PPI principles, methodologies, and best practices.
- **Networking Events:** Organise events to facilitate networking between researchers, patients, and the public, fostering collaboration and partnership opportunities.
- **Consultancy Services:** Offer consultancy services to research projects seeking to integrate PPI, providing tailored advice and support.
- **Evaluation and Feedback Mechanisms:** Implement robust evaluation and feedback mechanisms to assess the effectiveness of PPI activities and identify areas for improvement.
- **Public Engagement Campaigns:** Run campaigns to raise awareness about the importance of PPI and recruit diverse public members to participate in research.

How to evaluate

1. Develop Robust Feedback Mechanisms:

1. Implement regular and structured feedback loops that involve all stakeholders, including underrepresented groups.
2. Use digital platforms or face-to-face meetings for collecting feedback to accommodate different age groups and tech-savviness.

2. Promote Self-Reflective Practices:

1. Encourage regular self-assessment and reflection sessions for the research team and PPI contributors to identify strengths and areas for improvement.
2. Foster a culture of openness where constructive criticism is valued and acted upon.

3. Ensure Transparency of Power Differentials:

1. Clearly communicate the roles, responsibilities, and decision-making powers of each member involved in the PPI process.
2. Establish clear guidelines for conflict resolution and ensure that all voices are heard and valued equally, preventing power imbalances.

4. Adopt Participatory Action Research Models:

1. Utilize participatory action research (PAR) as a collaborative approach that involves participants in the research process, including problem identification, data collection, and analysis.
2. Design research activities that are accessible and engaging for various age groups to ensure meaningful intergenerational involvement.

5. Evaluate and Adapt:

1. Continuously evaluate the effectiveness of the implemented strategies through both quantitative and qualitative methods.
2. Be flexible in adapting approaches based on feedback and the evolving needs of the PPI group.

Assessing, recording, monitoring (?) measuring success

- **Impact Assessments:** Regularly assess the impact of PPI activities on research quality and outcomes.
- **Stakeholder Feedback Loop:** Gather feedback from all stakeholders, including researchers, patients, and the public, to continuously refine and improve the PPI processes.
- **Publication and Dissemination:** Document and share successful PPI case studies and outcomes through publications, conferences, blogs and online platforms.



Evaluation – Feedback loops



How has research been improved?

- Julia: *“I honestly think this should start with monitoring the feedback i.e. I wrote to you regarding suggestions, you decided to effect them. We need then to think about 'how' they improved the research. Did they make it clearer, change the emphasis, make it easier to understand/more accessible, etc.”*

Feedback on transitioning from YPAG to Adult advisor

Do you anticipate any challenges in a transition from YPAG to YOPAG?

6 responses

- availability maybe?
- Getting used to a new system
- Different themes
- We need to cater for different levels of understanding. Get rid of jargon and acronyms
- A hierarchy might develop if you have a gap in age and prejudices
- Uneven numbers of YPAG and opag will make an uncomfortable power imbalance

Navigation icons: back, forward, thumbs up (2), person (4)

Achievements so far

- Identified intergenerational workings as a need and connected /triangulated (?) three BRC themes, PAR (Patient and Research) and PPIOG across
- One 'use case /case study' has been the founding of the PPIE group for Molecular Targets
- For YPAG to add how the group has impacted (e.g., Asher could be talking about her recent presentation to the BRC, Sophie could be talking about the journey from YPAG to adult advisor
- Similarly for Roger and Julia to add their experience

Notes

FRAM 24th MAY 2024

FOUNDRING PLUS MOLECULAR TARGETS

Skills Pool

3x TRIANGULATION (YAG)

FOUNDRING

MOLECULAR TARGETS

DEPRESSION THEO/ETHICS

HELD/DECIDED (YAG)

PAR (STRATEGIC)

OLGA NORMA

AIM(S) + OBJECTIVES + OUTCOME (MISSION STATEMENTS)

MOL/TARGETS = concepts / good applicative

- integration with other PPIE
- education
- the biology of research.

YAG - staged information - LAM language

ACCESSIBLE (ITERATIVE DESIGN PROCESS)

- Nicola - nanoscale
- Robert - (Communication) Educating Officers with Mol target expertise

LOOKS TO REVIEW OF COPY

CORP GROUP

- ITEMS OF REFERENCE FOR PPIE GROUPS
- AIM - STRATEGY (Absence of Bureaucracy)
- CONSENT FORMS

OBJECTIVES

- education
- critical thinking

1/2 TRIANGULATION → MARCH 2025 REPORT

Stitch 25

Research confid.

SIR LUCIAN BLOCH - lead for neurodevel
4th year group.

- Future of each Theme depends upon EXTERNAL REVIEWS at HALF-TERM STAGE (MARCH 2025).

AREAS OF RESEARCH

- ETHICAL - why / ethical questioning
- TECHNICAL - lab / cell tissue in animal
- CONCEPTUAL - method - what is needed.

DATA BASE OF SKILLS + EXPERTISE → GROUP SPECIFIC

TRANSLATION INTO OTHER GROUPS

MOLECULAR BIOLOGY ↔ PSYCHIATRY

EXACT WAY EDUCATION

end goal of research.

INTEGRATE from the START.

DON'T ADD ON

(what brings the 4 PAGES to be involved?)

23.09.2024

emiric

- qualitative
- measurable outcomes

less nebulous

all stages of PPIE

because of professionalising PPIE

- Training
- skills development
- capacity

what are the - invisible skills.

NIHR is funder

PPIE requirement

will need to qualify

As soon as you say something has value - someone will want to measure it - and price it. - and professionalise it.

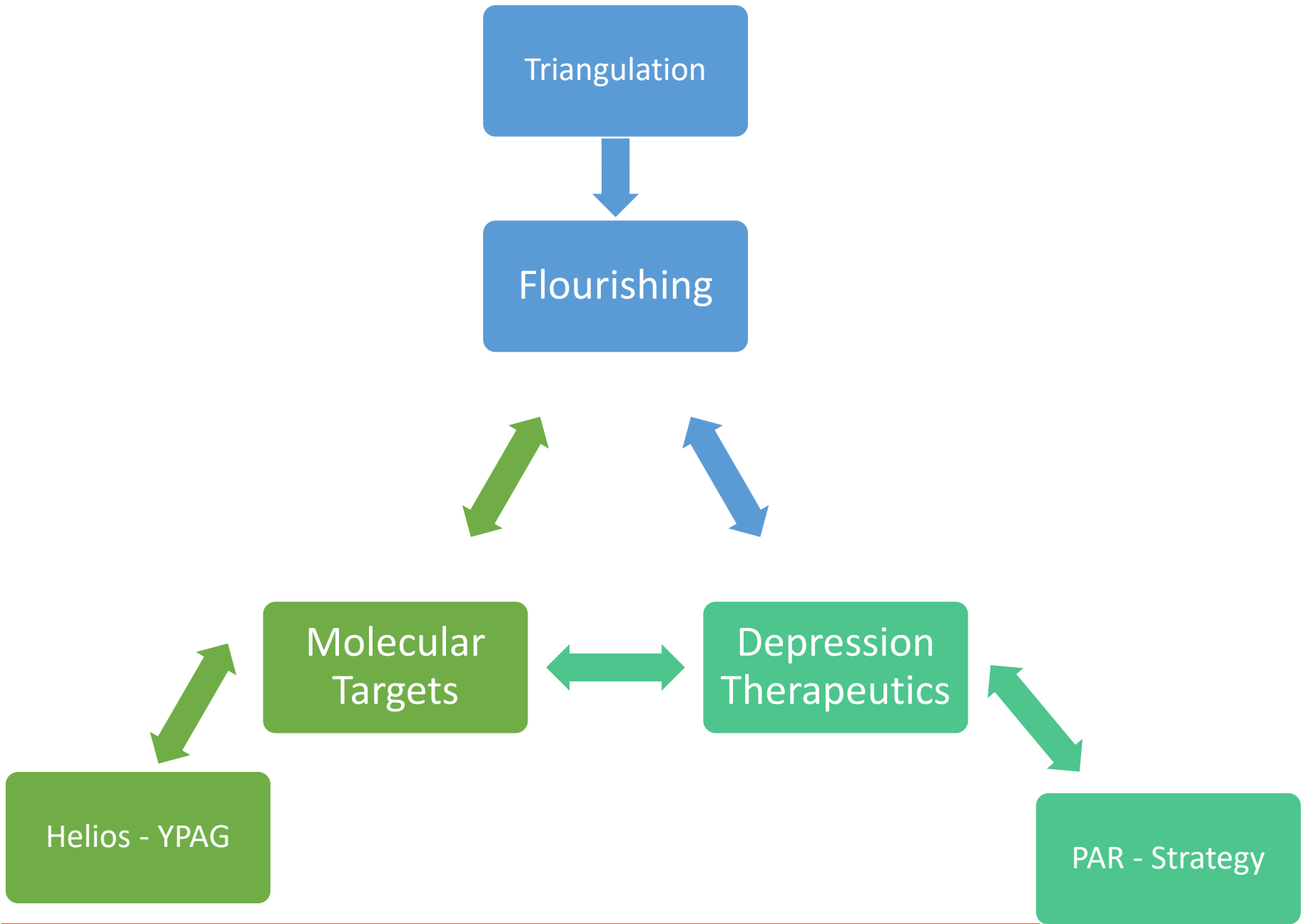
STRATEGIC OBJECTIVE → OPERATIONS (TACTICS)

BRS

PAR

TOR - as appendices

Stocks of relevant PPIE groups





Patient & Public Involvement Engagement Participation



No ethics needed,
But data protection
procedures (DPS, DPA,
DPIA).



Neither ethics or
data protection
procedures.



Ethics and data
protection
procedures are a
must.
Participants are
excluded from co-
production and
study design to
avoid bias.

