

# Would you like to join the Feedback Group for Dementia Research?

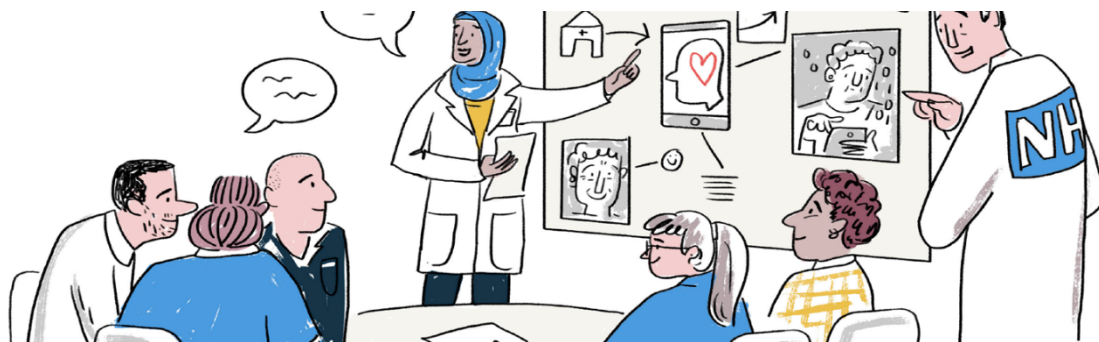
## **Join the Oxford Dementia Advisory Group and Help Shape Dementia Research.**

Are you passionate about improving dementia care and research? Do you have personal or professional experience with dementia, either directly or through someone you care for?

The **Oxford Dementia Advisory Group** at the **NIHR Oxford Health Biomedical Research Centre (BRC)** is looking for new members to help shape the future of dementia

### **About the Oxford Dementia Advisory Group**

Our group brings together people with lived experience of dementia and members of the public to collaborate with researchers.



Our goal is to ensure that dementia research is relevant, inclusive, and meaningful to those it aims to support. Members of the group help define new research projects, shape the patient experience, how we communicate well with people with memory problems and their families, and provide valuable perspectives to improve the design and delivery of research

### **Who are we looking for?**

We are committed to supporting diverse and inclusive participation. You don't need any prior research experience—just your perspective and willingness to get involved. We are looking for people:

- With experience of memory problems, either as a patient or carer
- Willing to support activities **in person or online**

We will also work with you to identify any support you may need to participate in the group. Payment for time and expenses will be provided.

**If you would like more information or to join the Oxford Dementia Advisory Group, please email [jasmine.blane@psych.ox.ac.uk](mailto:jasmine.blane@psych.ox.ac.uk) or call 01865 613102.**